



HPE WebInspect Enterprise

Manage your application security testing

Most enterprises rely heavily on the Web to conduct their normal operations, whether providing services, a mechanism for retail sales, or host of other functions. Yet, most still struggle with efficiently managing their application security risks. For one thing, they need solutions of scale that can be used to manage thousands of active sites and assessments while also tracking discovered vulnerabilities, retesting procedures, and more. They need to perform repeated security tests to address compliance with regulations, legislation, and internal security policies and also see how their risk posture has changed over time. The enterprises have to protect their data, brand, and bottom line from the harsh impacts of what successful vulnerability exploitation could bring. HPE WebInspect Enterprise enables organizations to solve these security problems quickly, efficiently, and intelligently.

Scale application security for broader coverage

To meet the increasing demand for global application coverage and pressure to complete more security assessments with the same resources, HPE WebInspect Enterprise gives you dynamic application-security testing that enables delivery of timely application-security intelligence across your entire enterprise no matter the size. The Web-based interface establishes a shared security service and extends security testing to a larger audience. Distributed architecture, remote sensor technology, scheduling, and control capabilities support simultaneous scanning of many applications—when and where it makes the most sense for your business.

Increase visibility, control over distributed security testing

With HPE WebInspect Enterprise, you can extend your dynamic application-security testing programs beyond the resources of your application security team. It gives you complete control over who is allowed to scan what, when, and who can view what test results. And because it has security expertise baked in, it empowers people who aren't traditionally Web-security experts to participate in dynamic application security testing. HPE WebInspect Enterprise gives security professionals and security novices alike the power and knowledge to quickly identify and validate critical, high-risk security vulnerabilities in applications running in development, QA, or production.

Prove compliance with regulations and security policies

With the growing need to comply with internal and external regulations, HPE WebInspect Enterprise enables you to set and mandate security policies across teams and applications. Predefined, out-of-the-box reports for all major compliance regulations related to application security—such as Payment Card Industry Data Security Standard (PCI DSS), Open Web Application Security Project (OWASP) Top 10, and Health Insurance Portability and Accountability Act (HIPAA)—let you prove your compliance with minimal effort.

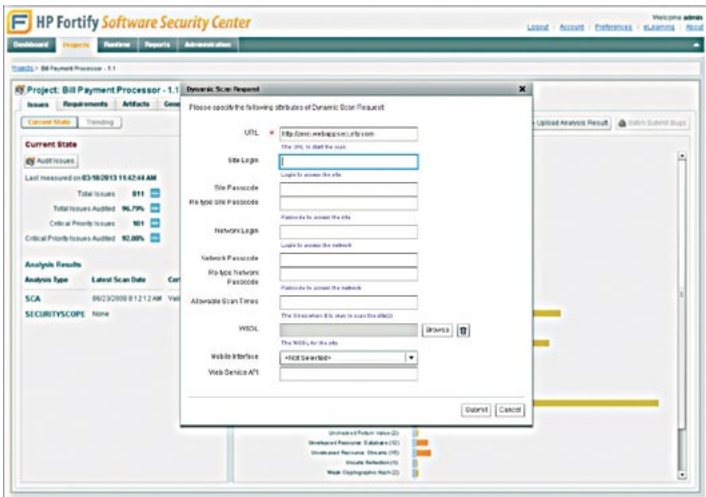


Figure 1: Dynamic Scan Request dramatically improves the assessment workflow process

Key functionality

HPE Software Security Center

As a component of HPE Software Security Center, HPE WebInspect Enterprise lets organizations manage their Web application assessments in a central location. As the saying goes, security is a process, not a product. HPE Software Security Center lets you build that process and utilize information from different scanning technologies (such as static testing) to present the truest picture of your organizational risks.

Task management

Requesting an assessment is part of a “natural” workflow that significantly streamlines the vulnerability management process. Stakeholders such as “development” can now resolve security issues and request retesting from HPE Software Security Center without having to play interdepartmental email “tag” to move the process forward.

Web-based

HPE WebInspect Enterprise contains all the power of and familiar visualization elements of HPE WebInspect, but on the Web. Overall assessment management is much faster, more accessible, and easier to maintain.

Vulnerability lifecycle management

Users can quickly make results available to developers and see how results have changed from scan to scan, determine which previously discovered issues have been resolved, and examine any new vulnerabilities that have been introduced.

Advanced vulnerability management

One key factor in security testing—and an important capability provided by HPE WebInspect Enterprise—is the ability to monitor critical metrics, progress, and trends across large-scale application-security testing programs.

Scalability

HPE WebInspect Enterprise provides a scalable platform to assess Web applications across an entire enterprise and an organization-wide view of application security giving users the knowledge to make informed risk-management decisions.

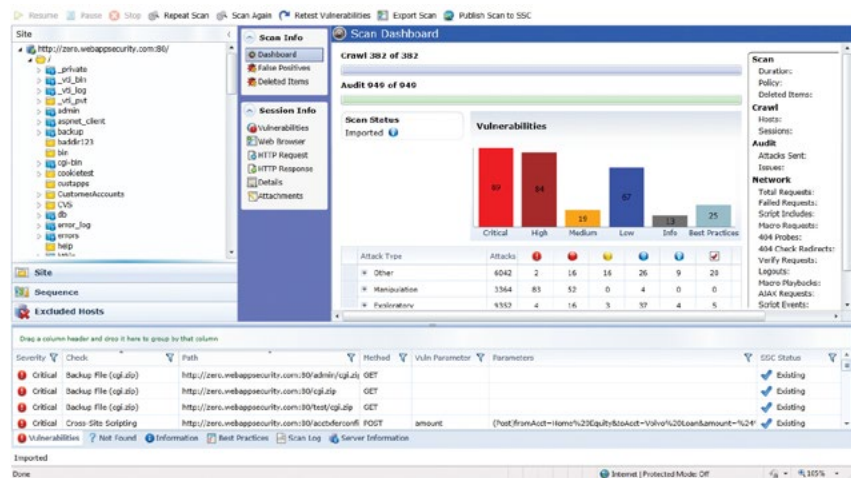


Figure 2: The Web-based GUI of HPE WebInspect Enterprise

Benefits at a glance

- Manage large-scale, distributed security testing programs across thousands of applications
- Provide an ongoing enterprise-wide view of production and preproduction application security assurance
- Control your application security program through role-based scanning and reporting administration
- Establish a shared, self-service Web application security service across organizational silos
- Manage artifacts and findings from multiple automated and manual scans into consistent assessment workspaces
- Improve vulnerability information and communications
- Reduce inefficient and inconsistent assessment and vulnerability management processes
- Build a single point of record for your application security assessments
- Reuse scan templates and configurations for repeatable, consistent security testing
- Protect sensitive security information and control the use of powerful Web application scanning tools
- Observe organizational level trends, risks, and opportunities to assess the return on security investment
- Identify and track those sites which provide the greatest risk to your organization
- Handle thousands of active sites, scans, and vulnerabilities
- Distribute Web vulnerability scanners across your enterprise where they are needed most
- Discover unreported and untested Web applications so they may be properly tested for security vulnerabilities

Successfully manage your enterprise security needs

HPE WebInspect Enterprise can be your key to successfully managing large-scale dynamic application-security testing programs in your growing enterprise. It can give you sophisticated management capabilities that automatically keep up with a flood of Web applications and security activities. It can deliver direct and timely visibility into your risk profile and help you identify security trends. If you're ready to achieve the level of vulnerability management that is crucial to a successful security program, then contact your HPE Software sales representative today.

About HPE Security

Hewlett Packard Enterprise is a leading provider of security and compliance solutions for the modern enterprise that wants to mitigate risk in their hybrid environment and defend against advanced threats. Based on market leading products from HPE ArcSight, HPE Fortify, and HPE TippingPoint, the HPE Security Intelligence Platform uniquely delivers the advanced correlation, application protection, and network defenses to protect today's hybrid IT infrastructure from sophisticated cyber threats. Find out more at hp.com/go/SIRM.

HPE Fortify

HPE Fortify offers comprehensive SSA solutions featuring the broadest line of products and services in the market today. HPE Fortify solutions help you build trust in the software you depend on by helping you find, fix, and fortify applications in less time and for less cost than comparable tool-centric strategies. Find out more at hp.com/go/Fortify.

Learn more at
hp.com/go/webinspect



Sign up for updates

★ Rate this document



**Hewlett Packard
Enterprise**

© Copyright 2012–2013, 2015 Hewlett Packard Enterprise Development LP. The only warranties for Hewlett Packard Enterprise products and services are set forth in the express warranty statements accompanying such products and services. Nothing herein should be construed as constituting an additional warranty. Hewlett Packard Enterprise shall not be liable for technical or editorial errors or omissions contained herein.

4AA4-2881ENW, December 2015, Rev. 2