

Tapestry Data Migration Manager (DMM) is a simple but powerful tool that provides affordable, high-performance, online and offline data migration in heterogeneous storage environments.

TAPESTRY DATA MIGRATION MANAGER

HIGHLIGHTS

- Provides up to a terabyte-per-hour migration speed for fast, low-cost migration of block storage data
- Helps eliminate downtime and business disruption by supporting online migration
- Standardizes data migration for heterogeneous storage environments, enabling greater storage purchasing flexibility
- Minimizes the need for expensive operating system-specific, per-server software such as volume management and replication tools
- Supports storage arrays from industry leaders such as EMC, IBM, HP, and Hitachi
- Helps automate the data migration process, significantly reducing administrative time and effort

A More Effective Data Migration Tool

In today's dynamic enterprises, migrating block-level data has quickly become a high priority, especially when IT organizations purchase or lease new storage arrays. As they do so, these organizations must migrate the data residing on their existing arrays to the new arrays. Even if an older array will remain in production, organizations often choose to move critical, frequently accessed data to take advantage of newer high-performance arrays.

In addition, many organizations have recently implemented tiered storage systems, where they migrate less frequently accessed data to less-expensive storage devices. Unfortunately, the different tiers of storage often have different interfaces and functions that complicate data movement and limit the effectiveness of Information Lifecycle Management (ILM). Moreover, traditional migration tools have typically been expensive, difficult to use, and limited in their ability to interoperate between storage types and vendors.

A FLEXIBLE, EFFICIENT SOLUTION

To help organizations overcome these data migration challenges, Brocade® Tapestry™ Data Migration Manager (DMM) provides a fast, predictable, and fabric-centric migration solution for heterogeneous environments. A highly efficient solution, Tapestry DMM supports both online and offline migrations of block storage data to meet the specific requirements of various application environments.

Because it is designed for easy “wire-once” setup, organizations can deploy Tapestry DMM simply by connecting it to an existing Storage Area Network (SAN). As a result, they can quickly implement a reliable, cost-effective data migration solution in heterogeneous storage environments.

TAPESTRY DATA MIGRATION MANAGER

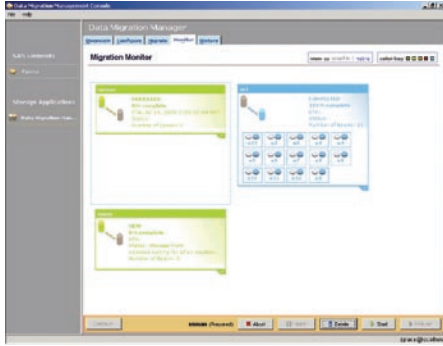


Figure 1. Tapestry DMM features an easy-to-use interface that simplifies migration tasks.

HIGH PERFORMANCE AT A LOW COST

Tapestry DMM provides a wide range of advantages over typical data migration offerings: it is faster, more affordable, and easier to use. Terabyte-per-hour migrations move more data in shorter windows, supporting the growing amounts of data today's organizations must manage. In fact, a single Tapestry DMM appliance can migrate up to 128 volumes in parallel.

Tapestry DMM also reduces both operating and capital expenses. It lowers operating expenses by reducing planning cycle overhead and actual execution time. In addition, organizations can lower their capital expenses by avoiding expensive storage-specific tools and by enjoying greater flexibility in the types of storage they use. In this way, Tapestry DMM provides cost-effective, project-oriented migration of data volumes independent of operating system, application, or storage array.

ONLINE MIGRATION FOR 24×365 APPLICATIONS

Tapestry DMM is a highly flexible solution that supports both online and offline data migration, enabling organizations to address the unique requirements of specific applications. This capability is especially useful for mission-critical data that must be available on a continuous basis.

Prior to a migration, organizations can easily insert Tapestry DMM into the data path and remove it just as easily after the project is complete. As a low-risk solution, Tapestry DMM helps ensure full data path integrity by leveraging industry-standard multipath software to direct all I/O traffic during the migration.

The ability to perform online migrations helps organizations maintain application Service Level Agreements (SLAs) and avoid disrupting their business operations. In fact, the arrays targeted for data migration can remain online throughout the migration process—with the entire process transparent to application users.

REDUCED COST, COMPLEXITY, AND COMPLIANCE ISSUES

Tapestry DMM is specifically designed to address cost, complexity, and compliance challenges. Compared to alternative offerings, it is typically much less expensive—both in reduced capital expenses (such as appliance hardware and management software) and operating expenses (such as administrative planning, professional services, and application downtime).

Tapestry DMM reduces IT complexity by requiring much less planning and hands-on execution time than alternative tools. In addition, predictive behavior keeps administrators informed about the state of migration and probable completion time. Moreover, Tapestry DMM standardizes support for the broadest range of heterogeneous storage devices.

To support heightened business and regulatory requirements, Tapestry DMM enables shorter migration windows and tighter SLAs, eliminating or reducing application downtime and risk. Moreover, heterogeneous support enables a true tiered storage approach where automated, policy-based ILM tools can match the appropriate storage cost to the corresponding data access need—improving both efficiency and consistency. In addition, fast data migration over SANs and WANs can enhance business continuance operations.

MAXIMIZING INVESTMENTS

Brocade and its partners offer complete solutions to meet a wide range of technology and business requirements. These solutions include education and training, support, service, and professional services to help optimize technology investments. For more information, contact an authorized Brocade sales partner or visit www.brocade.com.



Corporate Headquarters

San Jose, CA USA
T: (408) 333-8000
info@brocade.com

European and Latin American Headquarters

Geneva, Switzerland
T: +41 22 799 56 40
emea-info@brocade.com

Asia Pacific Headquarters

Singapore
T: +65-6538-4700
apac-info@brocade.com

© 2006 Brocade Communications Systems, Inc. All Rights Reserved. 07/06 GA-DS-765-01

Brocade, the Brocade B weave logo, Fabric OS, File Lifecycle Manager, MyView, Secure Fabric OS, SilkWorm, and StorageX are registered trademarks and Tapestry is a trademark of Brocade Communications Systems, Inc., in the United States and/or in other countries. FICON is a registered trademark of IBM Corporation in the U.S. and other countries. All other brands, products, or service names are or may be trademarks or service marks of, and are used to identify, products or services of their respective owners.

Notice: This document is for informational purposes only and does not set forth any warranty, expressed or implied, concerning any equipment, equipment feature, or service offered or to be offered by Brocade. Brocade reserves the right to make changes to this document at any time, without notice, and assumes no responsibility for its use. This informational document describes features that may not be currently available. Contact a Brocade sales office for information on feature and product availability. Export of technical data contained in this document may require an export license from the United States Government.